

2021

Maipu Router Product Line

Maipu Communication Technology Co., Ltd.



Agenda

CHAPTER 1

2021 Maipu Router Product Line

CHAPTER 2

Maipu & Cisco & Huawei Brief Comparison

CHAPTER 3

Maipu Router Typical Application

Maipu Router Product Line Family

MP7500X series

Headquarter
(>1000 users)



MP7500X-10



MP7500X-04

MP7300X series

Headquarter
(500-1000 users)

MP7300X-08



MP3900X series

Large-scale branch
(150-500 users)

MP3900X-08



MP3900X-06



MP2900X series

Medium-scale branch
(50-150 users)

MP2900X-24



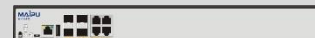
MP2900X-14P



MP2900X-14



MP2900X-04



MP1900X series

Small-scale branch
(50 users)

MP1900X-22



MP1900X-12



MP1800X series

Small Office
(25 users)

MP1800X-40E



MP1800X-40W



MP1800X-40



MP1800X-50



MP1800X-51



MP1700X series

Small Office
(10 users)

MP1700X-40



Maipu MP7500X Series Specifications

Core

Aggregation

Access

4G Edge



Pay As You
GROW



Item	MP7500X Series
WAN Throughput (Mpps)	MP7500X-04: 40Mpps/80Mpps/120Mpps MP7500X-10: 80Mpps/160Mpps/240Mpps
Switching Fabric Slots (SFU)	2
Control Engine Slots (MPU)	2
Service Process Unit (SPU+LPU)	4/8
Power Module Slots	4
Fan Array Slot	1
SD Extension Card	1
Memory(Default)	4GB/8GB
Flash (Default)	8GB
USB 2.0	1
Dimensions (W x D x H)	444mm*755mm*480mm (17U) 444mm*444mm*480mm (10U)



RM7E-SPU10



RM7E-SPU20



RM7E-SPU30

- Hot swapping of all modules;
- Dual Control Engines & Switching Fabric;
- Smoothly upgrade by changing the SPU module;
- Up to 48*40G QSFP Ethernet WAN interfaces;
- Up to 480*10G SFP+ Ethernet WAN interfaces;
- Up to 20*OC192 POS WAN interfaces.

Maipu MP7300X Series Specifications

Core

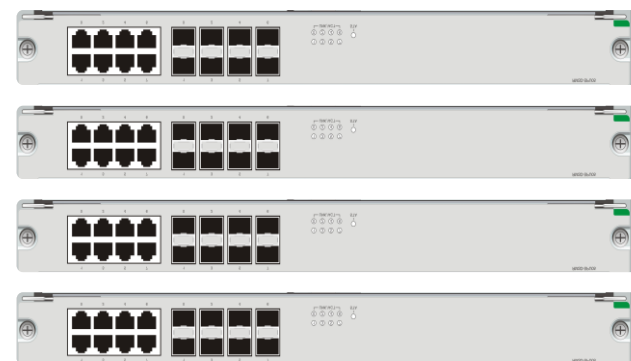
Aggregation

Access

4G Edge



Item	MP7300X-08 Series
WAN Throughput (Mpps)	5Mpps/10Mpps/20Mpps/40Mpps
Service Process Unit (SPU)	1
Control Engine Slots (MPU)	2
Line Card Slots (LPU)	8
Inbuilt WAN Ports	8*GET+8*GEF
Power Module Slots	2
Fan Array Slots	1
SD Extension Slots	1
Memory(Default)	4 GB
Flash (Default)	8 GB
USB 2.0	1
Dimensions (W x D x H)	442×435×177.5mm (4U)



RM3D-SPU05

RM3D-SPU10

RM3D-SPU20

RM3D-SPU40

- Hot swapping of all modules;
- Dual Control Engines;
- Multiple SPU modules for smooth upgrading;
- Up to 8*10G Ethernet WAN interfaces;
- Up to 88*1G Ethernet WAN interfaces;
- Up to 8*OC12 POS WAN interfaces.

Maipu MP3900X Series Specifications

Core

Aggregation

Access

4G Edge

Pay As You
GROW



RM3E-SPU40



RM3E-SPU10



RM3E-SPU05



RM3E-SPU03

Item	MP3900X-08 Series
WAN Throughput (Mpps)	3Mpps/5Mpps/10Mpps/40Mpps
Service Process Unit (SPU)	1
Line Card Slots (LPU)	8
Inbuilt WAN Ports	SPU03: 2*GET+3*GEF SPU05: 16*GET+8*GEF SPU10: 16*GET+8*GEF+2*10GEF SPU40:
Power Module Slots	2
Fan Array Slots	1
Memory(Default)	2 GB
Flash (Default)	8 GB
USB 2.0	1
Dimensions (W x D x H)	442mm*365mm*88.6mm (2U)

- Hot swapping of all modules;
- Multiple SPU modules for smooth upgrading;
- Up to 4*10G Ethernet WAN interfaces;
- Up to 48*1G Ethernet WAN interfaces;
- Up to 48*1G Ethernet LAN interfaces;
- Up to 6*OC12 POS WAN interfaces.

Maipu MP3900X-06 Specifications

Core

Aggregation

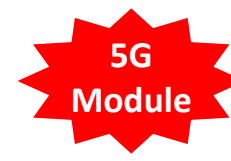
Access

4G Edge



Item	MP3900X-06
WAN Throughput (Mpps)	≥3Mpps
Inbuilt WAN Port	8 GE Combo
Extension Slot	6*RM2B Extension Slot
Power Supply	Fixed Dual Power Supply
Fan Array Slots	Fixed Fan Array
Memory(Default)	2 GB
Flash (Default)	8 GB
USB 2.0	1
Dimensions (W x D x H)	442mm×380mm×44.2mm (1U)

Maipu MP2900X Series Specifications

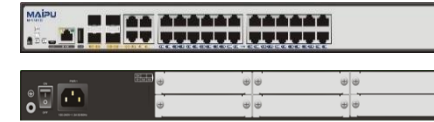
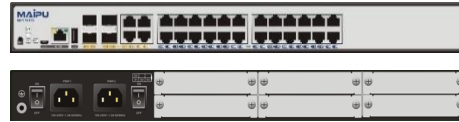
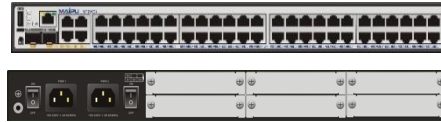


Core

Aggregation

Access

4G Edge



Item	MP2900X-24/24D	MP2900X-14/14D	MP2900X-14P	MP2900X-04/04D
WAN Throughput (Mpps)	≥1Mpps	≥1Mpps	≥1Mpps	≥1Mpps
Line Card Slots	4	4	4	4
Inbuilt WAN Ports	4*GET+2*GEF(combo)	4*GE Combo	4*GE Combo	4*GE Combo
Inbuilt LAN Ports	48*GET	24*GET	24*GET	N/A
PoE Ports	N/A	N/A	8*PoE Ports	N/A
Power Supply	1/2*AC	1/2*AC	1*AC	1/2*AC
Fan Enable	Fixed FAN	Fixed FAN	Fixed FAN	Fixed FAN
Memory(Default)	1GB	1GB	1GB	1GB
Flash (Default)	8GB	8GB	8GB	8GB
USB 2.0	1	1	1	1
Dimensions (W x D x H)	442mm×380mm×44.3mm	442mm×380mm×44.3mm	442mm×380mm×44.3mm	442mm×380mm×44.3mm

MP2900X Series is 1U high, supports inbuilt 24/48 Gigabit Ethernet interfaces and RPS.

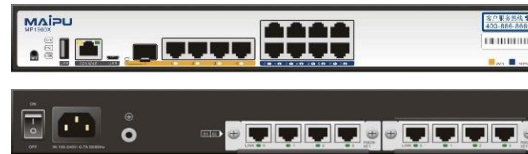
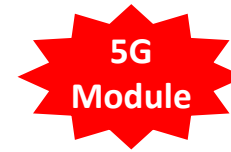
Maipu MP1900X Series Specifications

Core

Aggregation

Access

4G Edge



Item	MP1900X-22	MP1900X-12
WAN Throughput (Mpps)	≥800Kpps	≥450Kbps
Line Card Slots	2	2
Inbuilt WAN Ports	1*GEF+4GET	1*GEF
Inbuilt LAN Ports	8*GET	8*GET
Power Supply	1*AC	1*AC
Fan Enable	Fixed Fan	Fixed Fan
Memory(Default)	1GB	512 MB
Flash (Default)	128 MB	128 MB
USB 2.0	1	1
Dimensions (W x D x H)	340mm×260mm×44.2mm	340mm×260mm×44.2mm

MP1900X Series is 1U high, supports inbuilt 8 Gigabit Ethernet interfaces.

Maipu MP1800X Series Specification

Core

Aggregation

Access

4G Edge



Item	MP1800X-50	MP1800X-51	MP1800X-40E	MP1800X-40W	MP1800X-40
WAN Throughput (Mpps)	≥250Kpps	≥250Kpps	≥250Kpps	≥250Kpps	≥250Kpps
Inbuilt WAN Ports	1*GET	1*GE Combo	1*GET	1*GET	1*GET
Inbuilt LAN Ports	4*GET	5*GET	4*GET	4*GET	4*GET
Inbuilt Wi-Fi	N/A	N/A	N/A	802.11n 2*2 MIMO	N/A
Inbuilt 4G LTE Module	N/A	N/A	Dual 4G	Single 4G	Single 4G
4G Antenna	N/A	N/A	External	External	External
Power Supply	1*AC	1*AC	1*DC(12V)	1*DC(12V)	1*DC(12V)
Fan Enable	Fixed Fan	Fixed Fan	Fanless	Fanless	Fanless
Memory(Default)	1GB	1GB	512 MB	512 MB	512 MB
Flash (Default)	128 MB	128 MB	128 MB	128 MB	128 MB
USB 2.0	1	1	1	1	1
Working Temperature	0~45°C	0~45°C	-30~70°C	-30~70°C	-30~70°C
Dimensions (W x D x H)	260mm*190mm*44mm	260mm*190mm*44mm	145mm*100mm*38mm	145mm*100mm*38mm	145mm*100mm*38mm

MP1800X-40 Series is industrial level 4G LTE access router.

Maipu MP1700X Series Specification

Core

Aggregation

Access

4G Edge



Item	MP1700X-40
WAN Throughput (Mpps)	≥200Kpps
Inbuilt WAN Ports	1*GET
Inbuilt LAN Ports	4*GET
Inbuilt Wi-Fi	N/A
Inbuilt 4G LTE Module	N/A
4G Antenna	N/A
Power Supply	1*DC(12V)
Fan Enable	Fanless
Memory(Default)	512 MB
Flash (Default)	128 MB
USB 2.0	1
Working Temperature	0~45°C
Dimensions (W x D x H)	153mmX102mmX26mm

MP1700X-40 Series is a cost-effective 4G LTE access router.

Maipu Router Software Main Features

Typical protocol	DDR, PPP, Frame-Relay, Bridge, HDLC, SNA, PPPoE, LACP, Port isolation, VALN, Q-in-Q, MSTP, loopback detection, Error-Disable, MSTP, SPAN, LLDP, DHCP, DHCPv6
Routing protocol	Static Route/Static Routev6, RIP/RIPng, OSPFv2/OSPFv3, BGP/BGP4+, IS-IS/IS-ISv6, IRMP, PBR
Security	ACL filtering, NAT, Firewall, URL Filtering, Attack Protection, CPU protection, port security, AAA, IKE, PKI, 802.1X, URFP
VPN	MPLS, LDP, L2VPN, L3VPN, MPLS QoS, MPLS OAM, 6PE, GRE/GREv6, IP/IP, L2TP, L2TPv3, VRF
QoS	FIFO, PQ, FQ, WFQ, CBWFQ, LLQ, RSVP, CAR, H-QoS, traffic shaping, Rate Limitation
Multicast	IGMP, MLD, PIM-SM/SSM, PIM-DM/SDM PIMv6-SM/SSM, MSDP, MVPN, NG-MVPN, PIMv6-SM/SSM
Reliability	Backup interface, VRRP/VRRPv3, VBRP, Track, BFD/BFDv6
Management & Monitoring	Keepalive gateway, NTP, Mirroring, RMON, CWMP, CLI, SSH, WEB, SNMP V1/V2/V3, DNS, Telnet, PING, Trace Route, Login, FTP, TFTP, TR069, IPFIX traffic monitoring, IP-SLA

All Features Integrated in One IOS Without Extra License

Agenda

CHAPTER 1

2021 Maipu Router Product Line

CHAPTER 2

Maipu & Cisco & Huawei Brief Comparison

CHAPTER 3

Maipu Router Typical Application

Maipu MP1700X/MP1800X Vs. Cisco ISR921-4PLTE

Brand	Maipu				Cisco
Model Name	MP1700X-40	MP1800X-40	MP1800X-40W	MP1800X-40E	ISR921-4PLTE
4G LTE Modem	1	1	1	2	1
SIM Slots	2	2	2	2	1
USB Interface	1	1	1	1	1
Fixed WAN Port	1*GE	1*GE	1*GE	1*GE	2*GE
Fixed LAN Port	4*GE	4*GE	4*GE	4*GE	4*GE
Wireless	N/A	N/A	Yes	N/A	N/A
Working Temperature	0~45°C	-30~70°C	-30~70°C	-30~70°C	0~50°C
Software IOS	All-In-One Integrated IOS Without extra license				-IP Base: ACL, NAT, QoS, BFD, VRF, IP-SLA -APP License: L2TPv3, MPLS, VPLS -Security License: IPSec VPN, DMVPN

Maipu Advantages:

- Dual LTE Active-Active: MP1800X-40E support dual 4G Modems;
- Dual SIM Active-Backup: MP1700X-40/MP1800X-40/MP1800X-40W support one 4G modem dual SIM cards;
- Higher Working Temperature: MP1800X support up to 70°C working temperature;
- Universal IOS: All-In-One IOS, no need license.

Maipu MP1800X-50/51 Vs. Cisco ISR931-4P/921-4P

Brand	Maipu		Cisco	
Model Name	MP1800X-50	MP1800X-51	ISR921-4P	ISR931-4P
Fixed WAN Port	1*GE	1*GE Combo(RJ45+SFP)	2*GE	2*GE
Fixed LAN Port	4*GE	5*GE	4*GE	4*GE
USB Interface	1	1	1	1
Software IOS	All-In-One Integrated IOS Without extra license		-IP Base: ACL, NAT, QoS, BFD, VRF, IP-SLA -APP License: L2TPv3, MPLS, VPLS -Security License: IPSec VPN, DMVPN	

Maipu Advantages:

- Fiber WAN Uplink: MP1800X-51 support SFP fiber WAN port
- Universal IOS: All-In-One IOS, no need license.

Maipu MP1900X-12/22 Vs. Cisco ISR1101/1111 Series

Brand	Maipu		Cisco	
Model Name	MP1900X-12	MP1900X-22	ISR1101-4PLTEP	ISR1111-8PLTE
Fixed WAN port	1*GE SFP	1*GE SFP+4*GE	1*GE	1*GE+1*GE Combo
Fixed LAN port	8*GE	8*GE	4*GE	8*GE
Extension Slots	2	2	1	N/A
4G Module	1/2 (Pluggable)	1/2 (Pluggable)	1 (Pluggable)	1 (Fixed)
5G Module	1/2 (Pluggable)	1/2 (Pluggable)	N/A	N/A
E1/CE1/V.35/STM-1 Module	Yes	Yes	N/A	N/A
USB	1	1	1	1
Software IOS	All-In-One Integrated IOS Without extra license		-IP Base: ACL, NAT, QoS, BFD, VRF, IP-SLA -APP License: L2TPv3, MPLS, VPLS -Security License: IPSec VPN, DMVPN	

Key Advantages:

- More Integrated WAN Port: MP1900X-22 support up to 5 GE WAN port;
- Expansion Slots: MP1900X series support 2 expansion slots;
- 5G Upgrade: MP1900X support 5G SA/NSA Module;
- E1/CE1/V.35/STM-1: MP1900X support traditional TDM link;
- Maipu 1900X Series Router IOS is All-in-One design, no need extra expense for advanced features.

Maipu MP2900X Series Vs. Cisco ISR4331/4321/4221

Brand	Maipu			Cisco			
Product	MP2900X-24/24D	MP2900X-14/14D	MP2900X-04/04D	ISR4351	ISR4331	ISR4321	ISR4221
Height	1U	1U	1U	2U	1U	1U	1U
Throughput (bps)	>800Mbps	>800Mbps	>800Mbps	200-400Mbps	100-300Mbps	50-100Mbps	35M-75Mbps
Fixed WAN port	4	4	4	3	3	3	3
Fixed LAN port	48*GE	24*GE	N/A	N/A	N/A	N/A	N/A
Extension Slots	4	4	4	5	3	2	2
Power Supply	Single/Dual	Single/Dual	Single/Dual	Single	Single	Single(External)	Single(External)
Software IOS	All-In-One Integrated IOS Without extra license			-IP Base: ACL, NAT, QoS, BFD, VRF, IP-SLA -APP License: L2TPv3, MPLS, VPLS -Security License: IPSec VPN, DMVPN			

Key Advantages:

- Higher Throughput Performance: MP2900X throughput is more than 800Mbps;
- More Integrated WAN Port: MP2900X series support up to 4 GE WAN port by default;
- More Integrated LAN Port: MP2900X-14/24 series support 24/48 Port GE LAN port by default;
- 5G Available: MP2900X series support 5G SA/NSA Module;
- Redundant Power: MP2900X-04D/14D/24D all support Dual AC power supply;
- No need booster Performance license: MP2900X high performance no need booster performance license;
- Maipu 2900X Series Router IOS is All-in-One design, no need extra expense for advanced features.

Maipu MP3900X-08/06 Vs. Cisco ISR4400 Series

Brand	Maipu		Cisco		
Product	MP3900X-08	MP3900X-06	ISR4461	ISR4451	ISR4431
Height	2U	1U	3U	2U	1U
Throughput(bps)	SPU03: >3Gbps ; SPU05: >5Gbps SPU10: >10Gbps ; SPU40: >40Gbps	>3Gbps	1.5G-3Gbps	1G-2Gbps	500M-1Gbps
Fixed WAN port	SPU03: 5*GE ; SPU05: 24*GE SPU10: 24*GE+2*10GE; SPU40: 16*GE+4*10GE	4*GE	4*GE+2*10GE	4*GE	4*GE
Extension Slots	8	6	6	5	3
Power Supply	Dual	Dual	Dual	Dual	Dual
Software IOS	All-In-One Integrated IOS Without extra license		-IP Base: ACL, NAT, QoS, BFD, VRF, IP-SLA -APP License: L2TPv3, MPLS, VPLS -Security License: IPSec VPN, DMVPN		

Key Advantages:

- Higher Throughput Performance: MP3900X throughput is more than 3Gbps;
- Grow as pay policy: MP3900X-08 has 4 kind of control engines, which integrated enough WAN port;
- No need booster Performance license: MP3900X high performance no need booster performance license;
- Maipu 3900X Series Router IOS is All-in-One design, no need extra expense for advanced features.

Maipu MP1800X Series Vs. Huawei AR160 Series

Brand	Maipu					Huawei		
Model	MP1800X-40	MP1800X-40W	MP1800X-40E	MP1800X-50	MP1800X-51	AR161	AR161G-L	AR161W
Default WAN	1*GE	1*GE	1*GE	1*GE	1*GE Combo	1*GE	1*GE	1*GE
Default LAN/WAN	4*GE	4*GE	4*GE	4*GE	5*GE	4*GE	4*GE	4*GE
3G/4G LTE	1	1	2	N/A	N/A	N/A	1	N/A
Wi-Fi	N/A	802.11b/g/n	N/A	N/A	N/A	N/A	N/A	802.11b/g/n
IPv4 Routing Protocol	Static route, RIP, OSPF, IS-IS, BGP					Static route, RIP, OSPF, IS-IS, BGP		
IPv6 Routing Protocol	Static routev6, RIPng, OSPFv3, IS-ISv6, BGP4+					Static routev6, RIPng, OSPFv3, IS-ISv6, BGP4+		
VPN	IPSec VPN, GRE VPN, DMVPN, L2TPv3 VPN					IPSec VPN, GRE VPN, DMVPN, L2TPv3 VPN		
MPLS/VPLS VPN	Yes	Yes	Yes	Yes	Yes	N/A	N/A	N/A
Multicast	IGMP, PIM-SM/DM, MSDP, MBGP					IGMP, PIM-SM/DM, MSDP, MBGP		
QoS	802.1P/DSCP/PQ/CBWFQ/CAR/WRED/H-QoS					802.1P/DSCP/PQ/CBWFQ/CAR/WRED/H-QoS		
Management	Web GUI, SNMP(v1/v2c/v3), RMON, NTP, CWMP, ZTP, CLI, SSH					Web GUI, SNMP(v1/v2c/v3), RMON, NTP, CWMP, ZTP, CLI, SSH		
Working temperature	-20~70°C	-20~70°C	-20~70°C	0-45°C	0-45°C	0-45°C	0-45°C	0-45°C
Power Supply	Adaptor	Adaptor	Adaptor	Inbuilt AC 220V	Inbuilt AC 220V	Adaptor	Adaptor	Adaptor

Maipu Advantages:

- Fiber Uplink: MP1800X-51 supports gigabit fiber uplink;
- Dual 4G LTE: MP1800X-40E supports Dual LTE Modems, can realize active-active;
- MPLS/VPLS VPN support: MP1800X series support advanced MPLS VPN;
- High temperature working: MP1800X-40 Series can work at 70 degree.

Maipu MP1900X Series Vs. Huawei AR1220 Series

Brand	Maipu		Huawei	
Model	MP1900X-12	MP1900X-22	AR1220C	AR1220E
Default WAN	1*GE SFP	1*GE SFP+4*GE	1*GE SFP+4*GE	2*GE Combo
Default LAN	8*GE	8*GE	8*GE	8*GE
Expansion slots	2	2	2	2
3G/4G Module	Yes	Yes	Yes	Yes
5G Module	Yes	Yes	N/A	N/A
IPv4 Routing Protocol	Static route, RIP, OSPF, IS-IS, BGP		Static route, RIP, OSPF, IS-IS, BGP	
IPv6 Routing Protocol	Static routev6, RIPng, OSPFv3, IS-ISv6, BGP4+		Static routev6, RIPng, OSPFv3, IS-ISv6, BGP4+	
VPN	IPSec VPN, GRE VPN, DMVPN, L2TPv3 VPN		IPSec VPN, GRE VPN, DMVPN, L2TPv3 VPN	
MPLS/VPLS VPN	Yes	Yes	Yes	Yes
Multicast	IGMP, PIM-SM/DM, MSDP, MBGP		IGMP, PIM-SM/DM, MSDP, MBGP	
QoS	802.1P/DSCP/PQ/CBWFQ/CAR/WRED/H-QoS		802.1P/DSCP/PQ/CBWFQ/CAR/WRED/H-QoS	
Management	Web GUI, SNMP(v1/v2c/v3), RMON, NTP, CWMP, ZTP, CLI, SSH		Web GUI, SNMP(v1/v2c/v3), RMON, NTP, CWMP, ZTP, CLI, SSH	
Working temperature	0-45°C	0-45°C	0-45°C	0-45°C
Power Supply	One AC	One AC	One AC	One AC

Maipu Advantages:

- 5G Upgrading: Maipu MP1900X series support 5G Module.

Maipu MP2900X Series Vs. Huawei AR2200 Series

Brand	Maipu			Huawei		
Model	MP2900X-04 MP2900X-04D	MP2900X-14 MP2900X-14D MP2900X-14P	MP2900X-24 MP2900X-24D	AR2204E	AR2204-27GE AR2204-27GE-P	AR2204-51GE-P
Default 1G WAN	4*GE Combo	4*GE Combo	2*GE+2*GE Combo	2*GE+1*GE Combo	2*GE+1*GE Combo	2*GE+1*GE Combo
Default 1G LAN	N/A	24*GE 24*GE(8*GE PoE)	48*GE	N/A	24*GE 24*GE(8*GE PoE)	48*GE(8*GE PoE)
Expansion slots	4	4	4	4	4	4
5G Module	Yes	Yes	Yes	N/A	N/A	N/A
IPv4 Routing Protocol	Static route, RIP, OSPF, IS-IS, BGP			Static route, RIP, OSPF, IS-IS, BGP		
IPv6 Routing Protocol	Static routev6, RIPng, OSPFv3, IS-ISv6, BGP4+			Static routev6, RIPng, OSPFv3, IS-ISv6, BGP4+		
VPN	IPSec VPN, GRE VPN, DMVPN, L2TPv3 VPN			IPSec VPN, GRE VPN, DMVPN, L2TPv3 VPN		
MPLS/VPLS VPN	Yes	Yes	Yes	Yes	Yes	Yes
Multicast	IGMP, PIM-SM/DM, MSDP, MBGP			IGMP, PIM-SM/DM, MSDP, MBGP		
QoS	802.1P/DSCP/PQ/CBWFQ/CAR/WRED/H-QoS			802.1P/DSCP/PQ/CBWFQ/CAR/WRED/H-QoS		
Management	Web GUI, SNMP(v1/v2c/v3), RMON, NTP, CWMP, ZTP, CLI, SSH			Web GUI, SNMP(v1/v2c/v3), RMON, NTP, CWMP, ZTP, CLI, SSH		
Working temperature	0-45°C	0-45°C	0-45°C	0-45°C	0-45°C	0-45°C
Power Supply	One AC/Dual AC	One AC/Dual AC	One AC/Dual AC	One AC	One AC/Dual AC	Dual AC

Maipu Advantages:

- More Default WAN Ports: Maipu MP2900X supports 4*GE inbuilt WAN port, Huawei AR2204 has 3*GE only;
- 5G Upgrading: Maipu MP2900X series support 5G Module.

Maipu MP3900X-06 Vs. Huawei AR2220E

Brand	Maipu			Huawei		
Model	MP3900X-06			AR2220E		
Default 1G WAN	8*GE Combo			2*GE + 1*GE Comb		
Expansion slots	6*RM2B			4*SIC		
5G Module	Yes			N/A		
IPv4 Routing Protocol	Static route, RIP, OSPF, IS-IS, BGP			Static route, RIP, OSPF, IS-IS, BGP		
IPv6 Routing Protocol	Static routev6, RIPng, OSPFv3, IS-ISv6, BGP4+			Static routev6, RIPng, OSPFv3, IS-ISv6, BGP4+		
VPN	IPSec VPN, GRE VPN, DMVPN, L2TPv3 VPN			IPSec VPN, GRE VPN, DMVPN, L2TPv3 VPN		
MPLS/VPLS VPN	Yes	Yes	Yes	Yes	Yes	Yes
Multicast	IGMP, PIM-SM/DM, MSDP, MBGP			IGMP, PIM-SM/DM, MSDP, MBGP		
QoS	802.1P/DSCP/PQ/CBWFQ/CAR/WRED/H-QoS			802.1P/DSCP/PQ/CBWFQ/CAR/WRED/H-QoS		
Management	Web GUI, SNMP(v1/v2c/v3), RMON, NTP, CWMP, ZTP, CLI, SSH			Web GUI, SNMP(v1/v2c/v3), RMON, NTP, CWMP, ZTP, CLI, SSH		
Working temperature	0-45°C	0-45°C	0-45°C	0-45°C	0-45°C	0-45°C
Power Supply	Dual AC			One AC	One AC/Dual AC	Dual AC

Maipu Advantages:

- More Default WAN Ports: Maipu MP3900X-06 supports more inbuilt WAN ports than AR2220E;
- 5G Upgrading: Maipu MP3900X-06 supports 5G Module.

Maipu MP3900X-08 Vs. Huawei AR3200

Brand	Maipu			Huawei		
Model	MP3900X-08			AR3200		
Switching Engine	MPU03 Engine	SPU05 Engine	SPU10 Engine	SRU40 Engine	SRU80 Engine	SRU200 Engine
Throughput (bps)	3Gbps	5Gbps	10Gbps	2Gbps	4Gbps	9Gbps
Default 1G WAN	2*GE Combo+1*GE SFP	16*GE+8*GE SFP	16*GE+8*GE SFP+2*10GE SFP+	3*GE Combo	3*GE Combo	4*GE Combo+2*10GE SFP+
Modular Design	Service Slot/Fan Slot/Power Slot			Service Slot/Fan Slot/Power Slot		
5G Module	Yes			N/A		
IPv4 Routing Protocol	Static route, RIP, OSPF, IS-IS, BGP			Static route, RIP, OSPF, IS-IS, BGP		
IPv6 Routing Protocol	Static routev6, RIPng, OSPFv3, IS-ISv6, BGP4+			Static routev6, RIPng, OSPFv3, IS-ISv6, BGP4+		
VPN	MPLS, IPsec VPN, GRE VPN, DMVPN, L2TPv3 VPN			MPLS, IPsec VPN, GRE VPN, DMVPN, L2TPv3 VPN		
Multicast	IGMP, PIM-SM/DM, MSDP, MBGP			IGMP, PIM-SM/DM, MSDP, MBGP		
QoS	802.1P/DSCP/PQ/CBWFQ/CAR/WRED/H-QoS			802.1P/DSCP/PQ/CBWFQ/CAR/WRED/H-QoS		
Management	Web GUI, SNMP(v1/v2c/v3), RMON, NTP, CWMP, ZTP, CLI, SSH			Web GUI, SNMP(v1/v2c/v3), RMON, NTP, CWMP, ZTP, CLI, SSH		
Working temperature	0-45°C			0-45°C		
Power Supply	Dual Power Slots			Dual Power Slots		

Maipu Advantages:

- Performance is higher: Maipu MP3900X-08 throughput is higher than AR3200;
- More Default WAN Ports: Maipu MP3900X-08 supports more inbuilt WAN ports than AR3200;
- 5G Upgrading: Maipu MP3900X-08 supports 5G Module.

Agenda

CHAPTER 1

2021 Maipu Router Product Line

CHAPTER 2

Maipu & Cisco & Huawei Brief Comparison

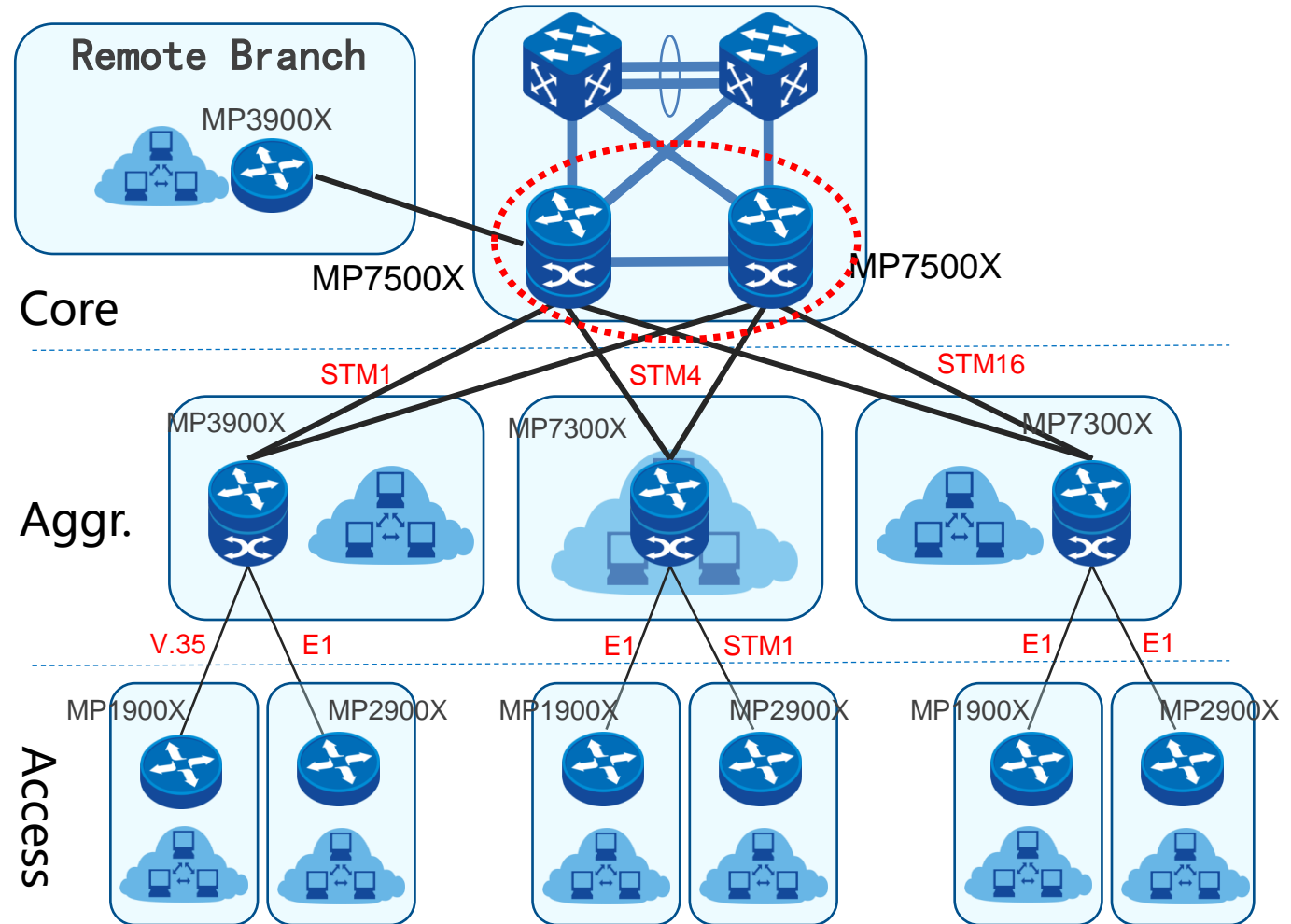
CHAPTER 3

Maipu Router Typical Application

Enterprise TDM WAN Network

Scenario Highlights:

- **Target Customers:**
Energy/Banking/Government/etc.
- **Related Models:**
Core: MP7500X
Aggregation: MP7300X/MP3900X
Access: MP1900X/MP2900X
- **Interface Requirements:**
2M E1/CE1, STM1/STM4/STM16 POS,
- **Technical Requirements:**
OSPF/BGP Routing Protocol, H-QoS,
BFD/FRR, MPLS, etc.



5G/4G Mobile Network For Bank ATM

Scenario Highlights:

- **Target Customers:**

Banking

- **Related Models:**

VPN Aggregation: MP7300X/MP3900X

Access: MP1700X/MP1800X/MP1900X

Management: E4G Platform

Authentication: AAS Platform

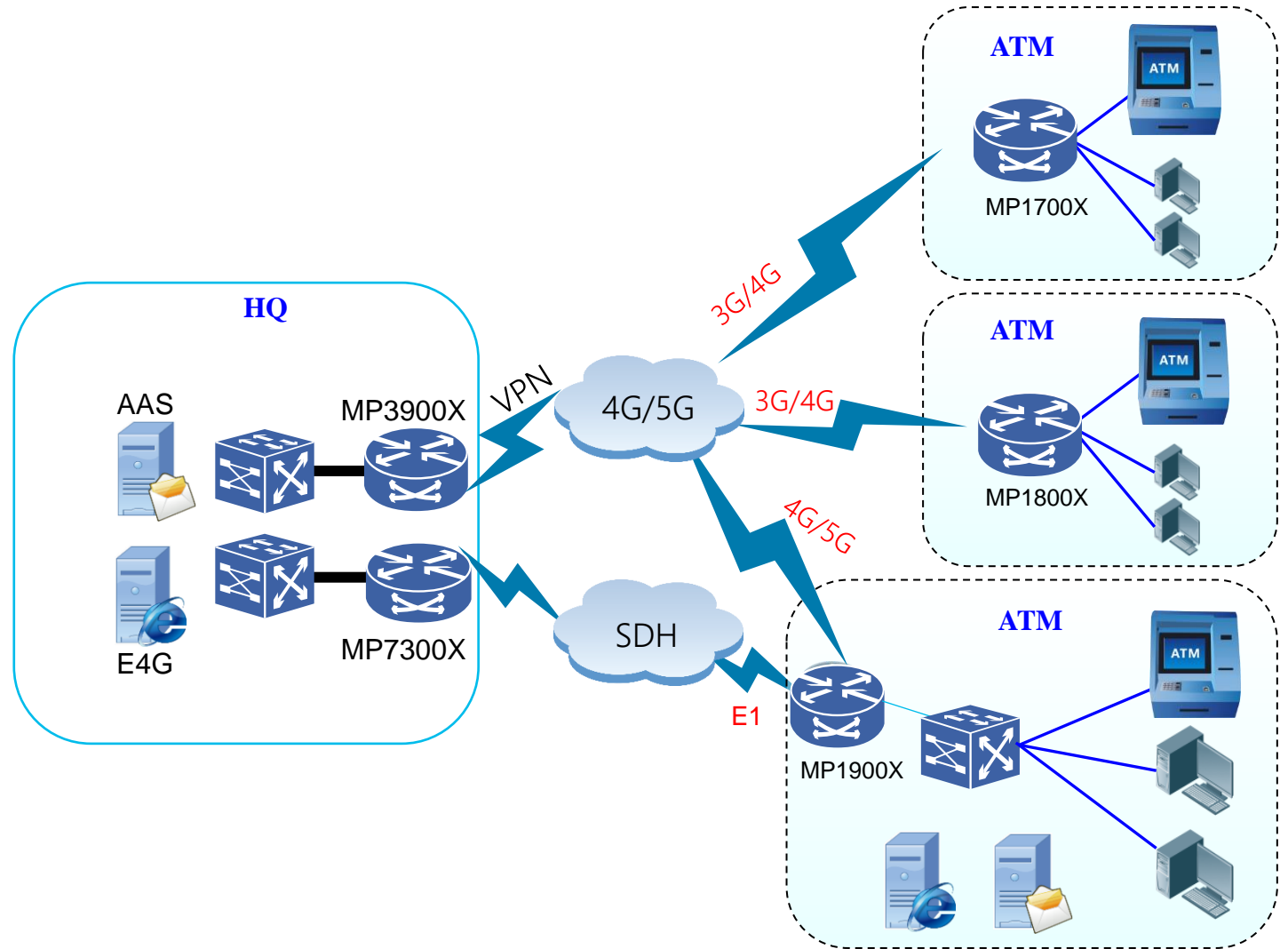
- **Interface Requirements:**

2M E1/CE1, 4G/5G LTE

Redundant Uplink.

- **Technical Requirements:**

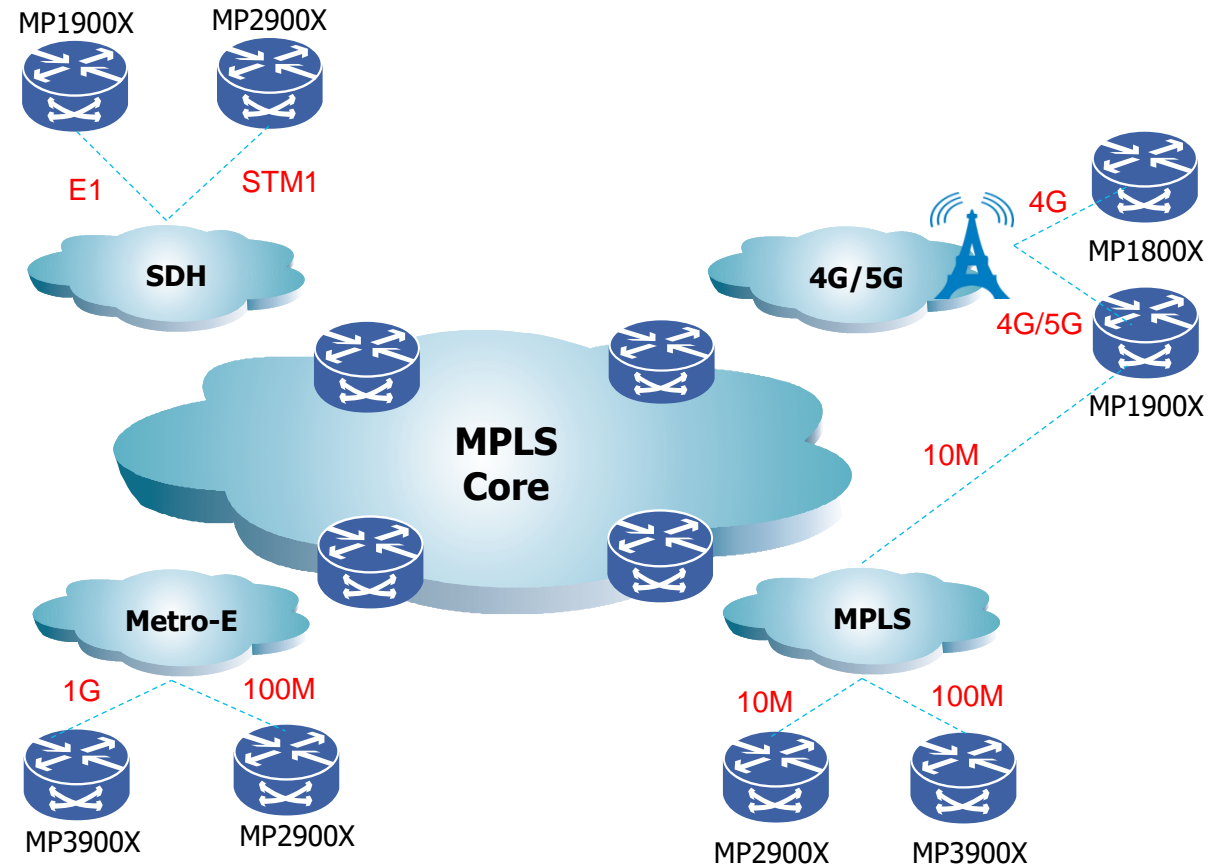
IPSec, GRE, L2TPv3, OSPF, BGP, NAT, etc.



Telecom MPLS CPE For Enterprise Customers

Scenario Highlights:

- **Target Customers:**
Telecom
- **Related Models:**
Office MPLS CE: MP1800X/MP1900X
Branch MPLS CE: MP2900X/MP3900X
- **Interface Requirements:**
4G/5G, E1/CE1, V.35, 155M POS,
Gigabit Ethernet
- **Technical Requirements:**
MPLS/VPLS VPN,BGP,FRR,BFD, etc.



Thank You

Maipu Communication Technology Co., Ltd.

E-mail: maipu@fgts.ru | Web: www.fgts.ru

